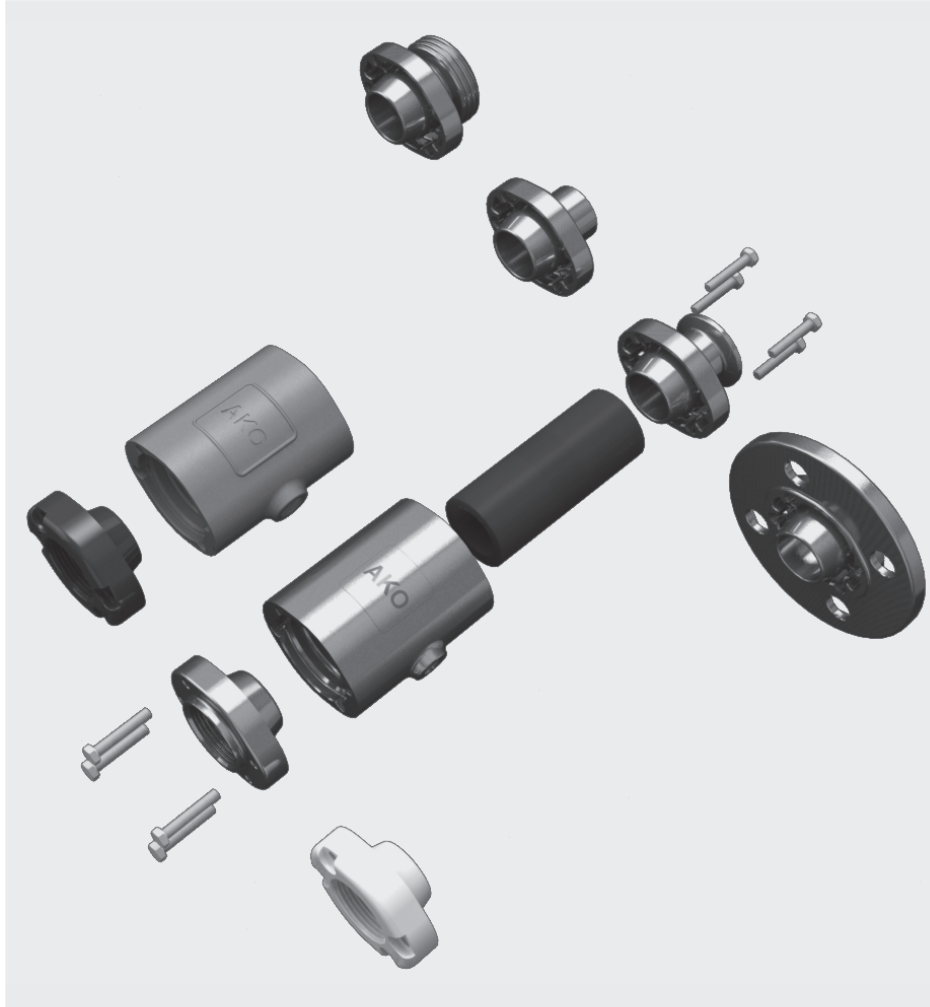


Air operated Pinch Valve type VMC



Threaded spigot



Weld-on ends




Tri-Clamp



Internal Thread



Flange

 **The flexible modular system for solvable and aseptic piping connections!**

The ideal solution for isolation and regulation of solids of all kinds, suspensions, pastes, gaseous, fibrous and viscous media.

Advantages:

- Flexible modular system
- Various connection options
- Extremely compact
- Light weight
- Complete free passage
- No dead spots
- Easy maintenance and re-sleeving
- 100% tight shut off
- Competitive

Air operated Pinch Valve type VMC

Industrial areas:

- Food/ pharmaceutical/ beverage industry
- Chemical industry
- Pneumatic conveying systems
- Pigments and granules
- Ceramics/ glass/ plastic industry
- Extraction systems
- Dosing systems
- Filling and weighing systems
- Air venting systems

Connections with various aseptic connections available!

Connection options:

Threaded spigot (RJT Connection)

Weld-on ends

Tri-Clamp

Internal Thread Connection G / NPT

Flange Connection

Special, conductive models with a separate earthing system, which are suitable for use in areas at risk of explosions (EX) in zones 1, 2, 21 and 22 are also available.

The air operated Pinch Valves of VMC series fulfil all requirements of the Pressure Equipment Directive 97/23/EC.

Materials:

Body: Stainless steel 1.4408

Aluminium AlSi10Mg

Socket Connection: Stainless steel 1.4404

Plastic POM

Sleeves:

Natural rubber antiabrasive, Natural rubber food quality, EPDM, EPDM food quality, Nitrile, Nitrile food quality, Hypalon, Neoprene, Silicone, Viton, other materials on request.

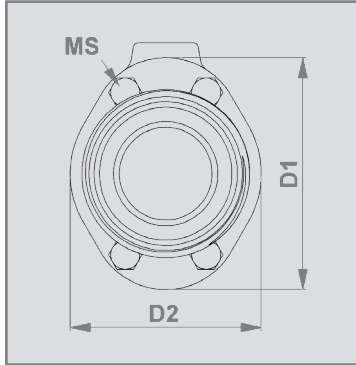
Operating / medium pressure max.: ~ 6 bar

Control / closing pressure max.: 8 bar

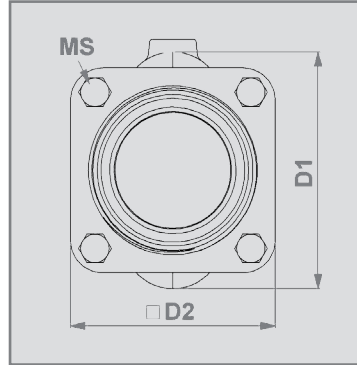
Differential pressure: 2-3.5 bar

varies depending on diameter / sleeve

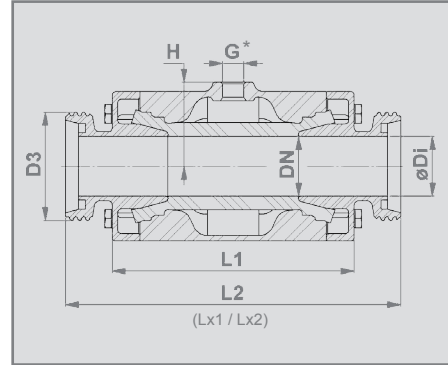
Air operated Pinch Valve - Threaded spigot



DN10 - DN50



DN65 - DN100



* DIN EN ISO 228 "G"

Connection type:

Threaded spigot according to DIN 11851

DIN 11853-1 (Lx1) / **11864-1 form B** (Lx2) on request

Body:

- Stainless steel 1.4408 (E)
- Aluminium AlSi10Mg (A)

Threaded spigot:

- Stainless steel 1.4404 (E)

Valve face to face length:

DN10: Acc. to DIN EN 558 row 27

DN15-50: Acc. to DIN EN 558 row 1

Valve finish:

Stainless steel: Electropolished matt

Wetted parts = Ra 0.5

Satin polished (brushed) Ra 0.3 on request.

Aluminium: Powder coated 60-80µm

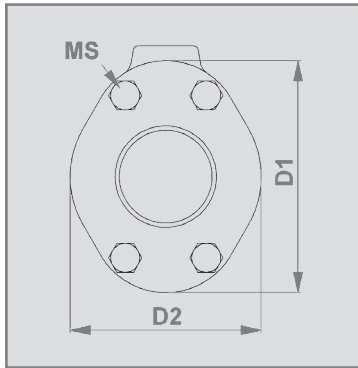
RAL 9006

DN (mm)	ø Di (mm)	D1 (mm)	D2 (mm)	D3	G (inch)	H (mm)	L1 (mm)	L2 (mm)	Lx1 (mm)	Lx2 (mm)	MS ¹	vol. (ml) ² (ca./approx.)	weight (kg) (EE)	weight (kg) (AE)
10	10	46	35	Rd28x1/8"	1/8"	23	68	115	153	197	4x(M6x16)	0,03	0,5	-
15	16	56	47	Rd34x1/8"	1/8"	28	85	130	178	222	4x(M6x20)	0,05	0,9	-
20	20	62	49	Rd44x1/6"	1/8"	31	93	150	194	237	4x(M6x25)	0,07	1,1	0,8
25	26	72	57	Rd52x1/6"	1/8"	36	110	160	217	253	4x(M6x30)	0,09	1,6	1,1
32	32	80	66	Rd58x1/6"	1/4"	45	130	180	238	276	8x(M6x35)	0,13	2,1	1,5
40	38	90	77	Rd65x1/6"	1/4"	50	150	200	252	288	8x(M6x35)	0,22	2,8	1,9
50	50	110	88	Rd78x1/6"	1/4"	60	175	230	278	314	8x(M6x35)	0,36	4,2	2,9

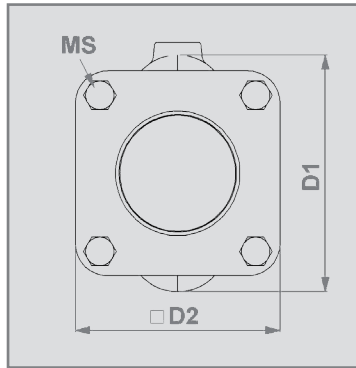
¹ Mounting screws according to DIN 933 (EN24107)

² Volume = Control volume with closed sleeve

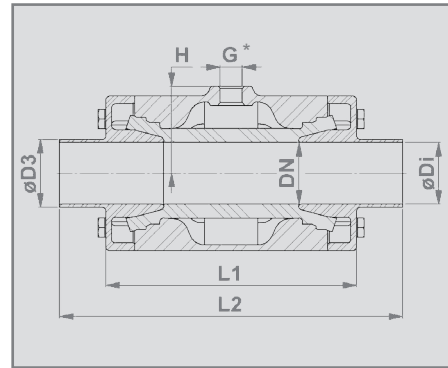
Air operated Pinch Valve - Weld-on ends



DN10 - DN50



DN65 - DN100



* DIN EN ISO 228 "G"

Connection type:

Weld-on ends according to DIN 11850 row 2

Body:

- Stainless steel 1.4408 (E)
- Aluminium AISi10Mg (A)

Weld-on ends:

- Stainless steel 1.4404 (E)

Valve face to face length:

DN10: Acc. to DIN EN 558 row 27

DN15-50: Acc. to DIN EN 12982 row 61

Valve finish:

Stainless steel: Electropolished matt

Wetted parts = Ra 0.5

Satin polished (brushed) Ra 0.3 on request.

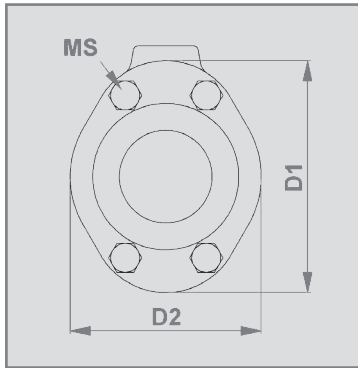
Aluminium: Powder coated 60-80µm
RAL 9006

DN (mm)	ø Di (mm)	D1 (mm)	D2 (mm)	ø D3 (mm)	L1 (mm)	L2 (mm)	G (inch)	H (mm)	MS ¹	vol. (ml) ² (ca./approx.)	weight (kg) (EE)	weight (kg) (AE)
10	10	46	35	13x1,5	68	115	1/8"	23	4x(M6x16)	0,03	0,5	-
15	16	56	47	19x1,5	85	140	1/8"	28	4x(M6x20)	0,05	0,8	-
20	20	62	49	23x1,5	93	152	1/8"	31	4x(M6x25)	0,07	1,0	0,6
25	26	72	57	29x1,5	110	165	1/8"	36	4x(M6x30)	0,09	1,4	0,9
32	32	80	66	35x1,5	130	178	1/4"	45	8x(M6x35)	0,13	1,9	1,3
40	38	90	77	41x1,5	150	190	1/4"	50	8x(M6x35)	0,22	2,5	1,6
50	50	110	88	53x1,5	175	216	1/4"	60	8x(M6x35)	0,36	3,8	2,5

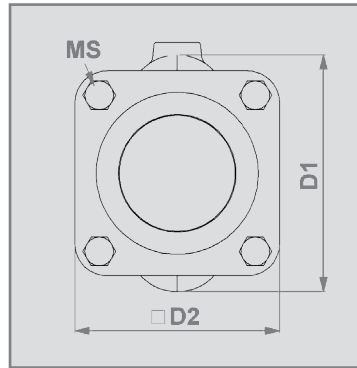
¹ Mounting screws according to DIN 933 (EN24107)

² Volume = Control volume with closed sleeve

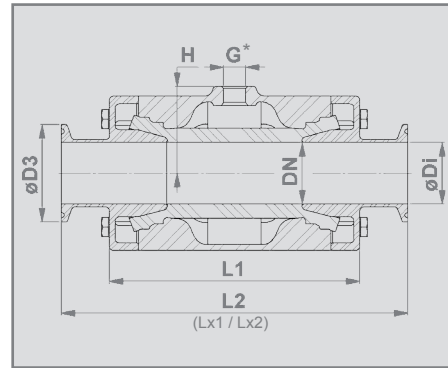
Air operated Pinch Valve - Tri-Clamp connection



DN10 - DN50



DN65 - DN100



* DIN EN ISO 228 "G"

Connection type:

Tri-Clamp according to DIN 32676

DIN 11853-3 (Lx1) / 11864-3 form B (Lx2) on request

Body:

- Stainless steel 1.4408 (E)
- Aluminium AISi10Mg (A)

Tri-Clamp Connection:

- Stainless steel 1.4404 (E)

Valve face to face length:

DN10: Acc. to DIN EN 558 row 27

DN15-50: Acc. to DIN EN 558 row 1

Valve finish:

Stainless steel: Electropolished matt

Wetted parts = Ra 0.5

Satin polished (brushed) Ra 0.3 on request.

Aluminium: Powder coated 60-80µm

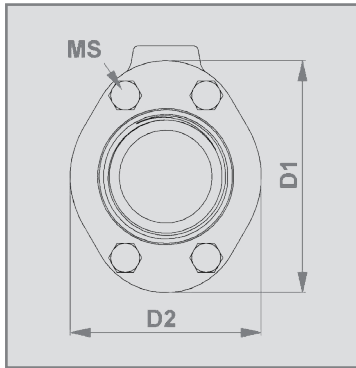
RAL 9006

DN (mm)	$\varnothing Di$ (mm)	D1 (mm)	D2 (mm)	$\varnothing D3$ (mm)	L1 (mm)	L2 (mm)	Lx1 (mm)	Lx2 (mm)	G (inch)	H (mm)	MS ¹	vol. (ml) ² (ca./approx.)	weight (kg) (EE)	weight (kg) (AE)
10	10	46	35	34	80	115	162	192	1/8"	23	4x(M6x16)	0,03	0,5	-
15	16	56	47	34	95	130	187	217	1/8"	28	4x(M6x20)	0,05	0,9	-
20	20	62	49	34	103	150	199	229	1/8"	31	4x(M6x25)	0,07	1,0	0,6
25	26	72	57	50,50	120	160	212	243	1/8"	36	4x(M6x30)	0,09	1,5	1,0
32	32	80	66	50,50	140	180	229	268	1/4"	45	8x(M6x35)	0,13	1,9	1,3
40	38	90	77	50,50	160	200	241	280	1/4"	50	8x(M6x35)	0,22	2,6	1,7
50	50	110	88	64	185	230	268	306	1/4"	60	8x(M6x35)	0,36	3,9	2,5

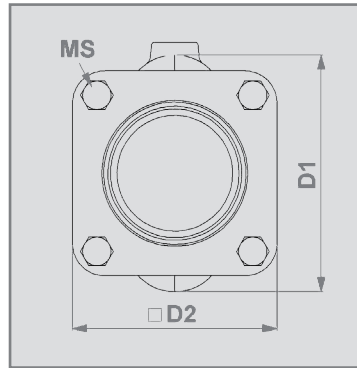
¹ Mounting screws according to DIN 933 (EN24107)

² Volume = Control volume with closed sleeve

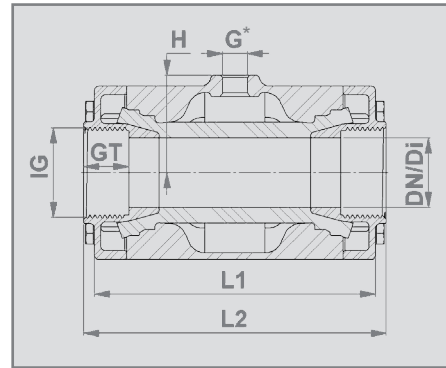
Air operated Pinch Valve - Internal Thread connection



DN10 - DN50



DN65 - DN100



* DIN EN ISO 228 "G"


Connection type:

Internal Thread Connection according to
DIN EN ISO 228 "G" or
ANSI/ASME B1.20.1 "NPT"

Body:

- Stainless steel 1.4408 (E)
- Aluminium AlSi10Mg (A)

(Internal Thread) Socket ends:

- Stainless steel 1.4404 (E)
- Plastic POM (P) natural white, FDA approved
- Plastic POM (P) conductive,
for hazardous areas 

Valve finish:

Stainless steel: Electropolished matt

Aluminium: Powder coated 60-80µm
RAL 9006

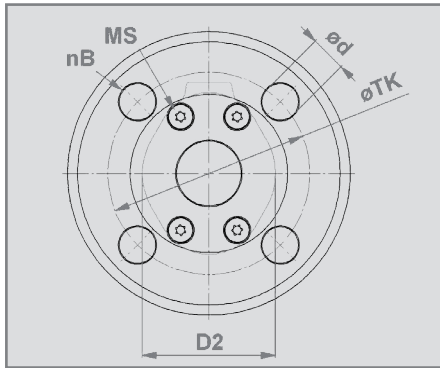
DN / Di (mm)	D1 (mm)	D2 (mm)	IG (inch)	GT (mm)	L1 (mm)	L2 (mm)	G (inch)	H (mm)	MS ¹	vol. (ml) ² (ca./approx)	weight (kg) (EE)	weight (kg) (AE)	weight (kg) (AP)
10	46	35	G $\frac{3}{8}$ "	12	68	80	1/8"	23	4x(M6x16)	0,03	0,5	-	-
15	56	47	G $\frac{1}{2}$ "	15	85	95	1/8"	28	4x(M6x20)	0,05	0,8	-	-
20	62	49	G $\frac{3}{4}$ "	17	93	103	1/8"	31,5	4x(M6x25)	0,07	0,9	0,6	0,4
25	72	57	G1"	20	110	120	1/8"	36,5	4x(M6x30)	0,09	1,4	0,8	0,5
32	80	66	G1 $\frac{1}{4}$ "	21	130	140	1/4"	45	8x(M6x35)	0,13	1,8	1,2	0,9
40	90	77	G1 $\frac{1}{2}$ "	21	150	160*	1/4"	50	8x(M6x35)	0,22	2,4	1,5	1,1
50	110	88	G2"	25	175	185	1/4"	60	8x(M6x35)	0,36	3,6	2,2	1,6

¹ Mounting screws according to DIN 933 (EN24107)

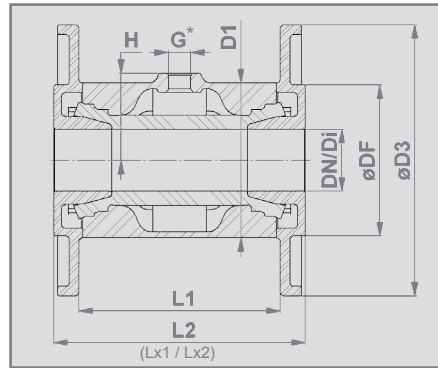
² Volume = Control volume with closed sleeve

* Alternatively available is our K-variant → length = 150mm

Air operated Pinch Valve - Flange connection



DN25 - DN50



* DIN EN ISO 228 "G"

Connection type:

Flange connection according to
DIN EN 1092-1 PN 10/16

DIN 11853-2 (Lx1) / 11864-2 form B (Lx2) on request

Body:

- Stainless steel 1.4408 (E)
- Aluminium AISi10Mg (A)

Flange:

- Stainless steel 1.4404 (E)

Valve finish:

Stainless steel: Electropolished matt

Wetted parts = Ra 0.5

Satin polished (brushed) Ra 0.3 on request.

Aluminium: Powder coated 60-80µm
RAL 9006

DN / Di (mm)	D1 (mm)	D2 (mm)	ø D3 (mm)	ø DF (mm)	nB ¹	ø d (mm)	ø TK (mm)	L1 (mm)	L2 (mm)	Lx1 (mm)	Lx2 (mm)	G (inch)	H (mm)	MS ²	vol. (ml) ³ (ca./approx.)	weight (kg) (EE)	weight (kg) (AE)
25	72	57	115	68	4	14	85	96	125	213	215	1/8"	36,5	4x(M6x35)	0,09	2,4	1,9
32	80	66	140	78	4	18	100	104	130	226	238	1/4"	45	8x(M6x35)	0,13	2,9	2,3
40	90	77	150	88	4	18	110	119	155	238	250	1/4"	50	8x(M6x35)	0,22	4,0	3,1
50	110	88	165	106	4	18	125	149	185	264	276	1/4"	60	8x(M6x35)	0,36	5,8	4,4

¹ Number of holes

² Mounting screws according to DIN 7985

³ Volume = Control volume with closed sleeve